

Adapt means 'Adapting'

And that is exactly what this innovative tilting seat shell base does. The ideal combination of wheelchair chassis and seat shell. Optimally adjustable so that self-driving, pushing and the installation of almost every seat shell has become a breeze.

Whether it is a sitting orthosis or seating shell system from third parties, the Adapt is the ideal adaptable base wheelchair! As one of the few on the market extremely suitable for users who themselves also hoops.

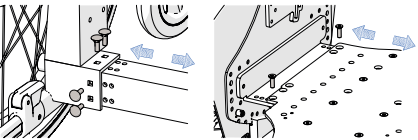
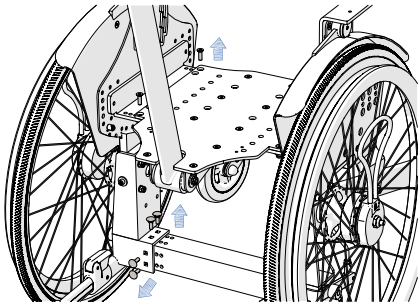
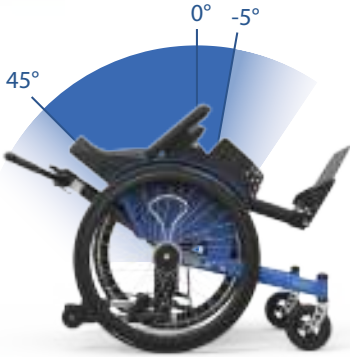


A couple of base functionalities

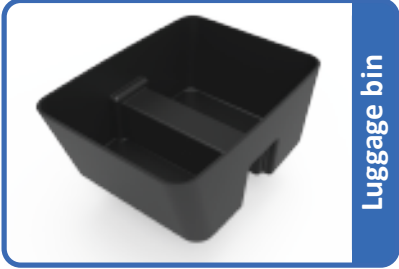
A tilt function for alternating sitting postures; up to 45° backwards for rest and possibly 5° forward for a transfer. The tilt function is easy to adjust to the desired individual positions and to be operated with the foot or optionally with manual operation.

Many accessory options due to open base frame and special adapters.

Drum brakes for the user easy to operate and (optional) to perform with our unique combi-drum brake system.



Anti-tippers



Luggage bin



Hand controls



Angle adjustable armrest

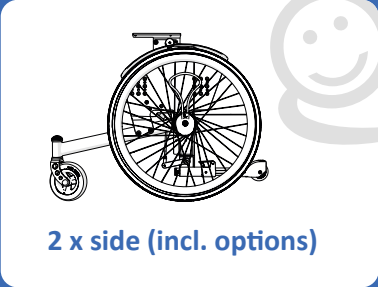


Angle adjustable push bar

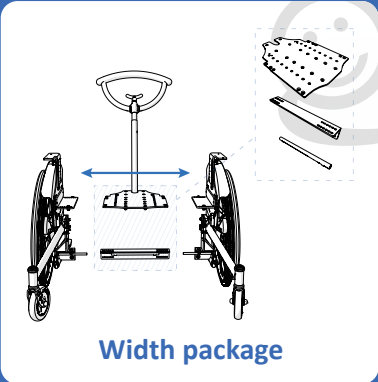
Positioning

The Adapt is available in 3 sizes (built-in widths) and has extensive setting options to achieve the optimal positioning. The wheelchair is easy to adjust in width as pictured to the left. Because of this the orthosis can be tightly mounted between the mudguard so the child can still easily reach the wheels. A must for the active rider!

The orthosis can be positioned well in depth through adjustment possibilities on the tilting plates, on the base plate holders and on the baseplate itself. This is very important for the balancing and riding properties of the entire wheelchair.



2 x side (incl. options)



Width package



Orthosis

